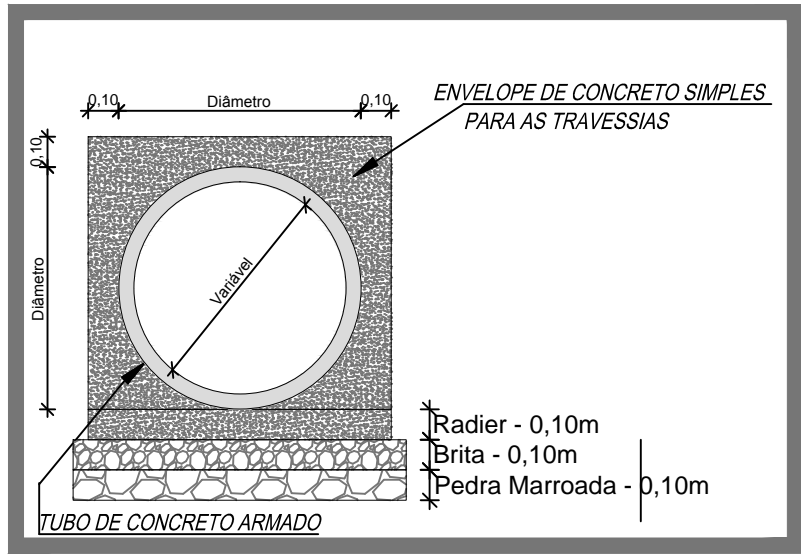


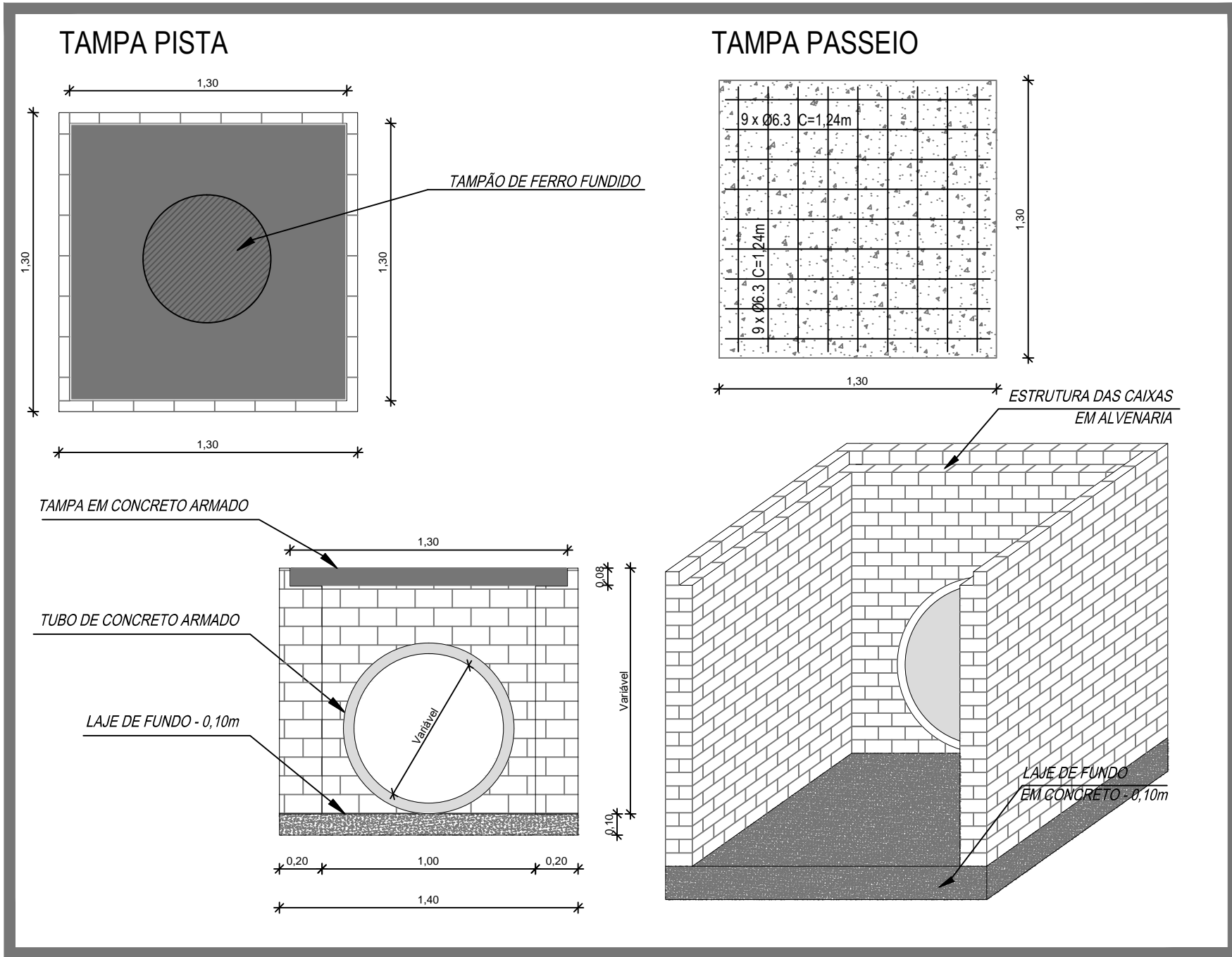
01 | DETALHE BOCA DE LOBO -
TAMPA E ESPELHO

ESCALA 1:50



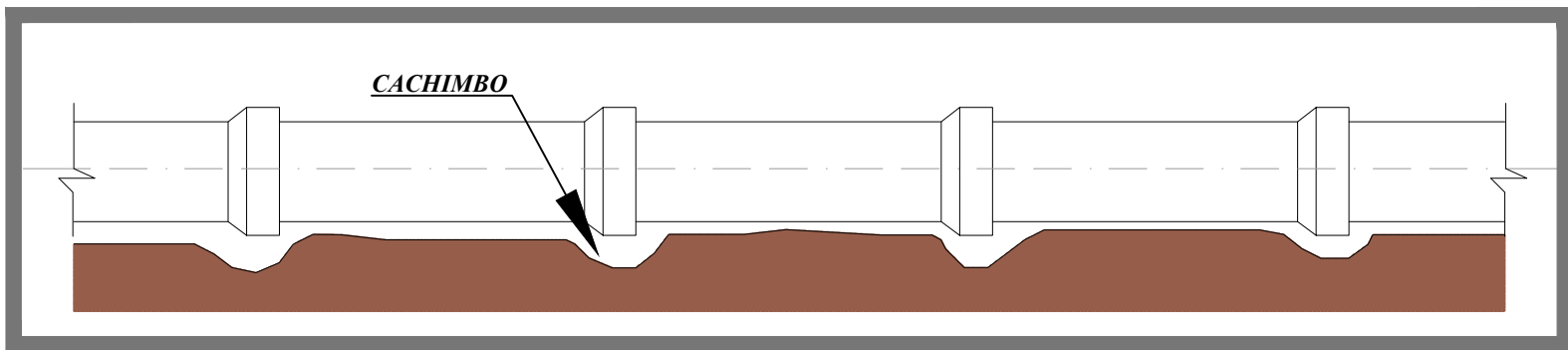
03 | DETALHE ENVELOPAMENTO
TUBULAÇÕES DAS TRAVESSIAS

ESCALA 1:50



02 | DETALHE CAIXA COLETORA - ALVENARIA DE TIJOLOS E TAMPA EM CONCRETO

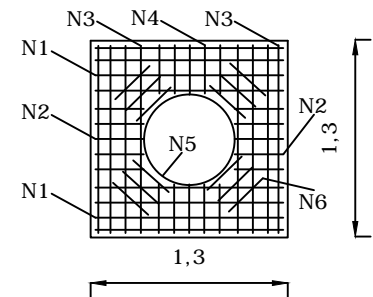
ESCALA 1:50



04 | BERÇO EM CALOTA NO TERRENO

ESCALA 1:50

ARMADURA POSITIVA



N1 - 8 Ø 10mm c/10 C=134cm

N2 - 10 Ø 10mm c/10 C=42cm

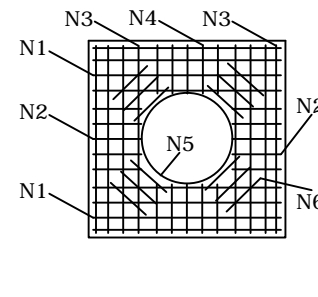
N3 - 8 Ø 10mm c/10 C=134cm

N4 - 10 Ø 10mm c/10 C=42cm

N5 - 1 Ø 10mm C=220cm

N6 - 12 Ø 10mm c/10 C=40cm

ARMADURA NEGATIVA



N1 - 8 Ø 10mm c/10 C=134cm

N2 - 10 Ø 10mm c/10 C=42cm

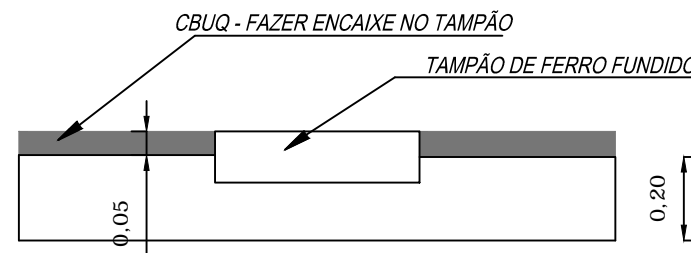
N3 - 8 Ø 10mm c/10 C=134cm

N4 - 10 Ø 10mm c/10 C=42cm

N5 - 1 Ø 10mm C=220cm

N6 - 12 Ø 10mm c/10 C=40cm

DETALHE TAMPÃO



SECRETARIA DE PLANEJAMENTO E GESTÃO

RUA LEONARDO COLARES
DETALHES

Data
MAI/2019

TRECHO DA INTERVENÇÃO - ENTRE MAL DEODORO E ANDRADE NEVES
--

Escala
1 / 50

EQUIPE TÉCNICA DA SEPLAG
Eng. Civil Karen Brasil Almeida Esperança - CREA 133204
Eng. Civil Mirela Silveira de Faria Miranda - CREA 146401

Prancha
UNICA